



Figure # 298

Bronze Threaded End Gate Valve

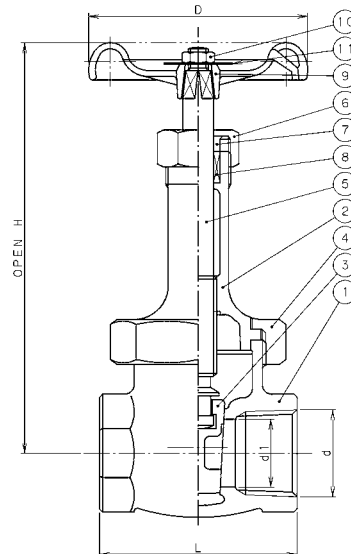
Product Features

- 150# WSP / 300# WOG
- Bronze Body
- Solid Disc
- Threaded Ends
- Union Bonnet
- Rising Stem



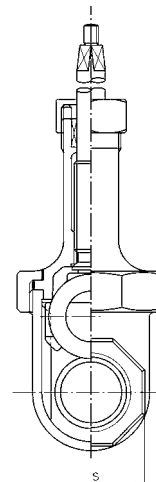
Materials & Specifications

Item	Description	Material	Specification
1	Body	Cast Bronze	B62-C83600
2	Bonnet	Cast Bronze	B62-C83600
3	Disc	Cast Bronze	B62-C83600
4	Union Nut	Bronze	B62-C83600
5	Stem	Brass	DR Alloy
6	Packing Nut	Brass	B283-C37700
	Packing Nut	Bronze 3" only	B62-C83600
7	Gland	Brass	B124-C37700
8	Gland Packing	Plastic Graphite	T#2996NA
9	Handwheel	Zinc Alloy 3/4" & up	B85-SC114A
	Handwheel	Alum. Alloy 3/8" - 1/2"	B86-AG40A
10	Wheel Nut	Steel	A36
11	Name Plate	Aluminum	B209



Dimensions, Weights (inches-lbs.) & Valve Data

Size	3/8	1/2	3/4	1	1-1/4	1-1/2	2	2-1/2	3
D	1.89	2.17	2.48	2.76	3.15	3.54	3.94	4.92	4.92
d (NPT)	0.375	0.50	0.75	1.00	1.25	1.50	2.00	2.50	3.00
H	4.76	5.24	6.22	7.60	8.70	9.84	11.97	14.49	16.77
L	1.85	2.13	2.28	2.64	2.87	3.03	3.31	4.17	4.53
S	0.95	1.14	1.38	1.65	2.08	2.24	2.76	3.39	3.94
Cv	5.7	12	26	42	72	120	210	335	486
Wt.	0.66	1.10	1.70	2.60	3.80	4.40	6.80	11.20	15.50



RED-WHITE VALVE CORP.

20600 Regency Lane, Lake Forest, CA 92630

TEL: 949.859.1010 • FAX: 949.859.7200 • www.redwhitevalvecorp.com