

DZR Lead Free Brass Full Port EzPress Ball Valve with Drain

Feature

- 600# WOG
- DZR lead free brass body
- Full port
- Dual EzPress ends
- Chrome plated ball
- PTFE seats
- Blow-out proof stem
- Adjustable packing
- MSS-SP-110
- AB1953, NSF/ANSI 61 & 372 certified

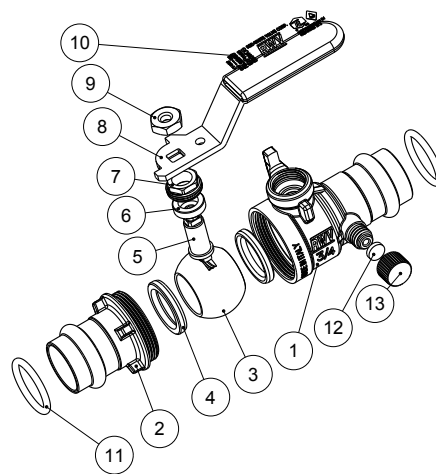
Meet BAA requirement



Pressure/ Temperature rating	
Valve body and stem	
600 psi from 15 °F to 160 °F	150 psi max. at 366 °F
Press connections	
250 psi from 15 °F to 160 °F	150 psi max. at 250 °F

Material

	Part	Material	Specification
1	Body	DZR Lead Free Brass	ASTM B927 C27453
2	End piece	DZR Lead Free Brass	ASTM B927 C27453
3	Ball	Lead Free Brass / Cr plated	ASTM B927 C28500
4	Seat	PTFE	PTFE
5	Stem	Lead Free Brass	ASTM B927 C28500
6	Packing ring	PTFE	PTFE
7	Packing nut	Brass	ASTM B124 C37700
8	Handle	Steel / Geomet® plated	ASTM A36
9	Nut	Steel / Zn plated	ASTM A36
10	Valve info	-	-
11	O-ring	EPDM Perox	NSF approved
12	Cap gasket	EPDM Perox	NSF approved
13	Plug	Brass	ASTM B124 C37700



Dimension, Cv, Weight

Size	A [in]	B [in]	L [in]	H [in]	D [in]	P [in]	C [in]	L1 [in]	P1 [in]	Cv	Wt. [lb]
1/2"	3.32	1.56	3.60	2.13	0.64	0.59	0.86	1.08	0.12	15	0.48
3/4"	3.94	1.93	3.60	2.26	0.89	0.79	0.98	1.23	0.12	30	0.70
1"	4.34	2.09	4.98	2.57	1.14	0.98	1.06	1.38	0.12	60	1.26

