

DZR Lead Free Brass Full Port EzPress Hose End Ball Valve

**Feature**

- 600# WOG
- DZR lead free brass body
- Full port
- EzPress x Hose end
- Male NH (ASME B1.20.7)
- Chrome plated ball
- Virgin PTFE seats
- Adjustable packing
- Blow-out proof stem
- Drain cap with chain
- MSS-SP-110
- AB1953, NSF/ANSI/CAN 61 & 372 certified



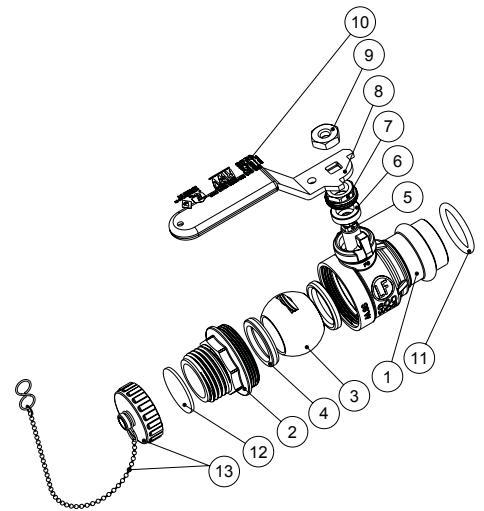
Meet BAA requirement

Pressure/ Temperature rating	
Valve body and stem	
600 psi from 15 °F to 160 °F	150 psi max. at 366 °F
Press connections	
250 psi from 15 °F to 160 °F	150 psi max. at 250 °F

\* Brass 3/4" hose connection cap factory-tested to 200 psi

**Material**

	Part	Material	Specification
1	Body	DZR Lead Free Brass	ASTM B927 C27453
2	End piece	DZR Lead Free Brass	ASTM B927 C27453
3	Ball	Lead Free Brass / Cr plated	ASTM B927 C28500
4	Seat	PTFE	PTFE
5	Stem	Lead Free Brass	ASTM B927 C27450
6	Packing ring	PTFE	PTFE
7	Packing nut	Brass	ASTM B124 C37700
8	Handle	Steel / Geomet® plated	ASTM A36
9	Nut	Steel / Zn plated	ASTM A36
10	Valve info	-	-
11	O-ring	EPDM Perox	NSF approved
12	Cap gasket	EPDM Perox	NSF approved
13	Drain cap + chain	Brass	ASTM B124 C37700



**Dimension, Weight**

Size	T	A	L	H	D	P	C	C1	Wt.
		[in]	[in]	[in]	[in]	[in]	[in]	[in]	[lb]
1/2"	3/4 - 11.5NH	2.91	3.60	2.13	0.64	0.59	0.87	0.51	0.582
3/4"	3/4 - 11.5NH	3.35	3.60	2.26	0.89	0.87	0.98	0.51	0.756

