

Feature

600# WOG
 Lead free brass body
 Drain port
 Full port
 Adjustable packing
 Solder x Solder
 Solder ends (ASME B16.22)
 Blow-out proof stem
 Chrome plated ball
 Virgin PTFE seats
 MSS-SP-110

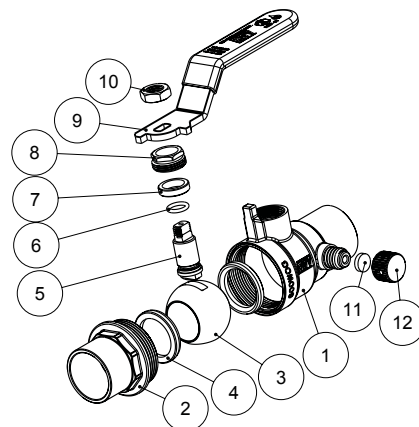


Pressure/ Temperature rating	
600 psi from 15 °F to 160 °F	150 psi max. at 200 °F

Connection Working Pressure		
Solder used in joint	Working temp (°F)	Max. working pressure (PSI)
95-5 Tin antimony (ASTM B32 grade 95TA)	100	500
	150	400
	200	300
	250	200

Material

	Part	Material	Specification
1	Body	Lead Free Brass	ASTM B283 C37700
2	End piece	Lead Free Brass	ASTM B283 C37700
3	Ball	Lead Free Brass / Cr plated	ASTM B283 C37700
4	Seat	PTFE	PTFE
5	Stem	Lead Free Brass	ASTM B283 C37700
6	O-ring	FKM	-
7	Packing	PTFE	PTFE
8	Packing nut	Brass	ASTM B124 C37700
9	Handle	Steel	A36
10	Handle nut	Steel / Zn plated	A36
11	Cap gasket	NBR	NSF approved
12	Plug	Brass	ASTM B124 C37700



Dimension, Weight

Size	Φ [in]	A [in]	C [in]	H [in]	L [in]	P [in]	P1 [in]	Wt. [lb]
½"	0.627-0.631	2.31	0.51	1.93	3.59	0.50	1.10	0.60
¾"	0.877-0.881	2.96	0.75	2.07	3.59	0.73	1.16	0.99
1"	1.128-1.131	3.56	0.91	2.35	4.97	0.94	1.33	1.43

