

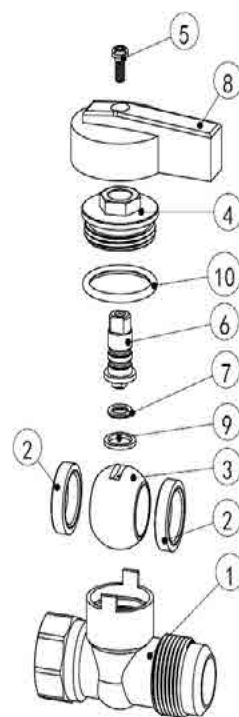
#### Feature

- 125 PSI (400 CWP)
- 1-piece brass body
- FNPT x Flared
- Threaded ends (ASME B1.20.1-NPT)
- Flare End SAE J513
- Chrome plated ball
- ANSI Z21.15 / CSA 9.1
- CSA 1/2 & 5 psi
- ASME B16.44/CSA9.4



#### Material

|    | Part    | Material          | Specification    |
|----|---------|-------------------|------------------|
| 1  | Body    | Brass             | UNS C37700       |
| 2  | Seat    | PTFE              | Commercial grade |
| 3  | Ball    | Brass / Cr plated | UNS C37700       |
| 4  | Cap     | Brass             | UNS C37700       |
| 5  | Screw   | Plated Steel      | ASME SA6         |
| 6  | Stem    | Brass             | UNS C37700       |
| 7  | O-ring  | NBR               | Commercial grade |
| 8  | Handle  | Aluminum          | ANSI A380        |
| 9  | Packing | PTFE              | Commercial grade |
| 10 | O-ring  | NBR               | Commercial grade |



#### Dimension, Weight

| Size | T1           | T2             | W<br>[in] | H<br>[in] | L<br>[in] | DN<br>[in] | C1<br>[in] | C2<br>[in] | Wt.<br>[lb] |
|------|--------------|----------------|-----------|-----------|-----------|------------|------------|------------|-------------|
| 3/8" | 1/2 - 14 NPT | 5/8 - 18 UNF   | 2.46      | 1.42      | 1.38      | 0.39       | 0.61       | 0.62       | 0.38        |
| 1/2" | 1/2 - 14 NPT | 3/4 - 16 UNF   | 2.52      | 1.42      | 1.38      | 0.39       | 0.61       | 0.75       | 0.39        |
| 3/4" | 3/4 - 14 NPT | 15/16 - 16 UNF | 2.95      | 1.54      | 1.48      | 0.59       | 0.63       | 0.87       | 0.62        |

