

### Feature

300# WOG  
 PP-RCT body  
 Polyfusion x Barb (ASTM F1960)  
 DZR lead free brass chrome-plated ball  
 DZR lead free brass stem  
 Virgin PTFE seats  
 Blow-Out proof stem  
 NBR O-ring packing  
 AB1953, NSF/ANSI 61 & 372 certified  
 NSF-14

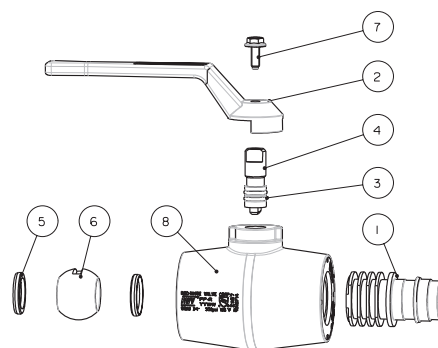


Meet BAA requirement

Max. Pressure	Max. Temperature
300 psi / 2068 kPa	185°F / 85°C

### Material

	Part	Material	Specification
1	PEX End	DZR Lead Free Brass	UNS C27453
2	Lever Handle	Nylon	PA6-50G
3	O-Ring	NBR	NBR
4	Stem	DZR Lead Free Brass	UNS C27453
5	Seat	PTFE	PTFE
6	Ball	DZR Lead Free Brass/Cr Plated	UNS C27453
7	Screw	Steel	Steel
8	Body	Polypropylene	PP-RCT



### Dimension

Size	A	C	D	E	H	L	P	Wt. L
in DN	[in] [mm]	[in] [mm]	[in] [mm]	[in] [mm]	[in] [mm]	[in] [mm]	[in] [mm]	[lb] [g]
1/2" 20	2.66 68	0.57 14	1.81 46	0.71 18	2.36 60	4.02 102	0.59 15	0.32 150
3/4" 25	2.78 71	0.63 16	2.01 51	0.95 24	2.36 60	4.02 102	0.59 15	0.49 222
1" 32	3.13 80	0.71 18	2.28 58	1.81 46	2.48 63	4.02 102	0.79 20	0.61 277

