

Feature

150# WSP / 600# WOG
 Brass body
 Full port
 Adjustable packing
 FNPT x Hose end
 Threaded end (ASME B1.20.1-NPT)
 Male NH (ASME B1.20.7)
 Chrome plated ball
 Virgin PTFE seats
 MSS-SP-110
 Blow-out proof stem
 Drain cap with chain



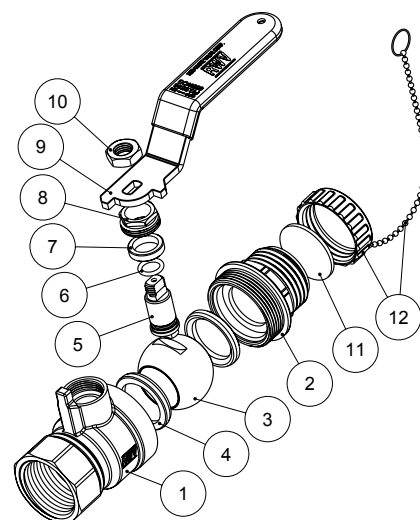
Pressure/ Temperature rating

600 psi from 15 °F to 160 °F	150 psi max. at 366 °F
------------------------------	------------------------

Material

	Part	Material	Specification
1	Body	Brass	ASTM B283 C37700
2	End piece	Brass	ASTM B283 C37700
3	Ball	Lead Free Brass / Cr plated	ASTM B927 C27450
4	Seat	PTFE	PTFE
5	Stem	Lead Free Brass	ASTM B927 C27450
6	O-ring	FKM	NSF approved
7	Packing ring	PTFE	PTFE
8	Packing nut	Brass	ASTM B124 C37700
9	Handle	Steel / Dacromet® plated	ASTM A36
10	Handle nut	Steel / Zn plated	ASTM A36
11	Gasket ¹	NBR	NSF approved
12	Drain cap + chain	Brass	ASTM B283 C37700

¹ Not suitable for temperature above 200 °F



Dimension, Cv, Weight

	TF	TM	A [in]	B [in]	C [in]	H [in]	L [in]	P [in]	Cv	Wt. [lb]
3/4"	3/4 - 14 NPT	3/4 - 11.5 NH	2.90	0.51	0.63	2.05	3.58	0.73	26	0.64

