

Feature

150# WSP / 600# WOG
 Lead free brass body
 Full port
 Adjustable packing
 Solder x Hose end
 Solder end (ASME B16.22)
 Male NH (ASME B1.20.7)
 Chrome plated ball
 Virgin PTFE seats
 MSS-SP-110
 Blow-out proof stem
 Drain cap with chain
 AB1953, NSF/ANSI/CAN 61 & 372 certified



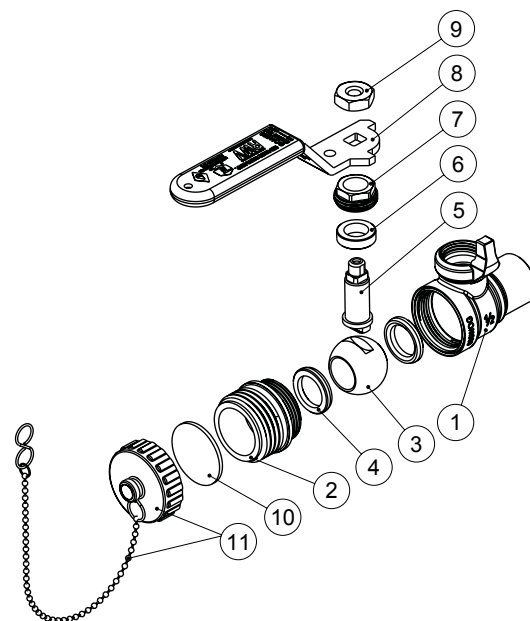
Pressure/ Temperature rating	
600 psi from 15 °F to 160 °F	150 psi max. at 366 °F

* Brass 3/4" hose connection cap factory-tested to 200 psi

Material

	Part	Material	Specification
1	Body	DZR Lead Free Brass	ASTM B927 C27453
2	End piece	DZR Lead Free Brass	ASTM B927 C27453
3	Ball	Lead Free Brass / Cr plated	ASTM B927 C27450
4	Seat	PTFE	PTFE
5	Stem	DZR Lead Free Brass	ASTM B927 C27453
6	Packing ring	PTFE	PTFE
7	Packing nut	Brass	ASTM B124 C37700
8	Handle	Steel / Dacromet [®] plated	ASTM A36
9	Handle nut	Steel / Zn plated	ASTM A36
10	Gasket ¹	EPDM Perox	NSF approved
11	Drain cap + chain	Brass	ASTM B283 C37700

¹ Not suitable for temperature above 200 °F



Dimension, Weight

Size	S	TM	A [in]	B [in]	C [in]	H [in]	L [in]	P [in]	Wt. [lb]
1/2"	0.627-0.631	3/4 - 11.5 NH	2.52	0.51	0.51	2.07	3.60	0.50	0.49
3/4"	0.877-0.881	3/4 - 11.5 NH	3.12	0.51	0.75	2.20	3.60	0.73	0.66

