



ECO-VALVE

Figure # 5592AB

Low Lead Brass Ball Valve

Product Features

- 150# WSP / 600# WOG
- Low Lead Brass Body
- Full Port
- Adjustable Packing
- Threaded Ends
- Blow-Out Proof Stem
- CSA 1/2 PSI (1/4"-3")
- AB1953, NSF-61 & NSF-372 Certified

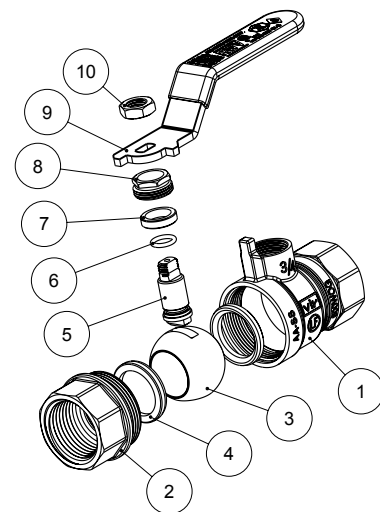


Certified to ANSISF 61



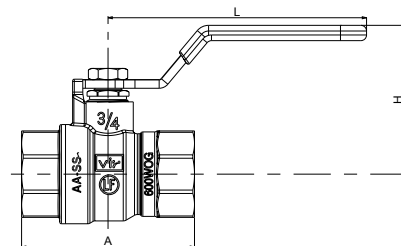
| Pressure/Temperature Rating | |
|-----------------------------|----------------------|
| 600 PSI from 15°F to 160°F | 150 PSI MAX at 366°F |

| Connection Working Pressure | | | | |
|---|----------------------|--------------------------------|-------------|-------------|
| Solder used in joints | Working Temp deg. °F | Maximum working pressure (PSI) | | |
| | | 3/8" - 1" | 1-1/4" - 2" | 2-1/2" - 3" |
| 95-5 Tin Antimony (ASTM B32 grade 95TA) | 100 | 500 | 400 | 300 |
| | 150 | 400 | 350 | 275 |
| | 200 | 300 | 250 | 200 |
| | 250 | 200 | 175 | 150 |



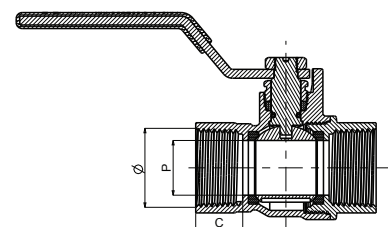
Materials & Specifications

| Item | Description | Material | Specification |
|------|-------------|--------------------------|---------------|
| 1 | Body | Low Lead Brass | C28000 |
| 2 | End piece | Low Lead Brass | C28000 |
| 3 | Ball | Low Lead Brass/Cr Plated | C28000 |
| 4 | Seat | PTFE | PTFE |
| 5 | Stem | Low Lead Brass | C28000 |
| 6 | O-ring | FKM | FKM |
| 7 | Packing | PTFE | PTFE |
| 8 | Packing nut | Brass | B124 C37700 |
| 9 | Handle | Steel / Dc Plated | A36 Dacromet |
| 10 | Handle nut | Steel / Zn Plated | A36 |



Dimensions, Weights (inches-lbs.) & Valve Data

| Size | 1/4 | 3/8 | 1/2 | 3/4 | 1 | 1-1/4 | 1-1/2 | 2 | 2-1/2 | 3 | 4 |
|------|------|------|------|------|------|-------|-------|------|-------|-------|-------|
| A | 1.77 | 1.77 | 2.17 | 2.40 | 2.91 | 3.31 | 3.54 | 4.09 | 5.31 | 6.02 | 6.89 |
| C | 0.45 | 0.45 | 0.61 | 0.63 | 0.75 | 0.77 | 0.77 | 0.79 | 1.06 | 1.14 | 1.20 |
| H | 1.54 | 1.54 | 1.93 | 2.05 | 2.36 | 2.60 | 2.87 | 3.25 | 4.17 | 4.53 | 5.00 |
| L | 3.19 | 3.19 | 3.58 | 3.58 | 4.96 | 4.96 | 5.55 | 5.55 | 7.91 | 11.06 | 11.06 |
| P | 0.39 | 0.39 | 0.50 | 0.73 | 0.95 | 1.22 | 1.46 | 1.95 | 2.44 | 2.91 | 3.54 |
| Cv | 8 | 8 | 11 | 26 | 55 | 103 | 111 | 353 | 409 | 530 | 972 |
| Wt | 0.28 | 0.28 | 0.43 | 0.59 | 1.01 | 1.40 | 1.91 | 3.05 | 6.33 | 8.50 | 11.80 |



RED-WHITE VALVE CORP.

20600 Regency Lane, Lake Forest, CA 92630

TEL: 949.859.1010 • FAX: 949.859.7200 • www.redwhitevalvecorp.com

(160502)