



# ECO-VALVE

## Figure # 5595AB

Low Lead Brass Ball Valve

### Product Features

- 150# WSP / 600# WOG
- Low Lead Brass Body
- Full Port
- Adjustable Packing
- Solder Ends
- Blow-Out Proof Stem
- NSF-61-G & NSF-372 Certified

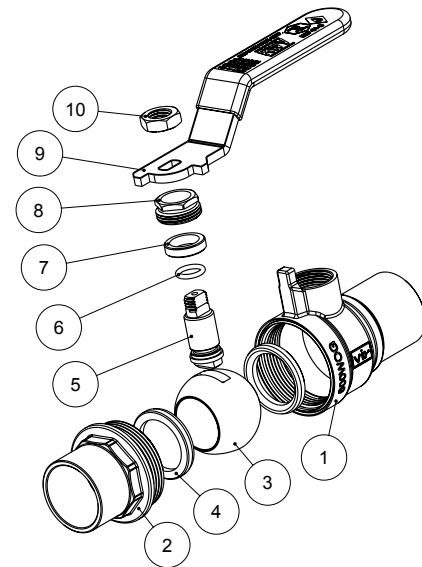


Certified to  
ANSI/NSF 61



Pressure/Temperature Rating	
600 PSI from 15°F to 160°F	150 PSI MAX at 366°F

Connection Working Pressure				
Solder used in joints	Working Temp deg. °F	Maximum working pressure (PSI)		
		3/8" - 1"	1-1/4" - 2"	2-1/2" - 3"
95-5 Tin Antimony (ASTM B32 grade 95TA)	100	500	400	300
	150	400	350	275
	200	300	250	200
	250	200	175	150

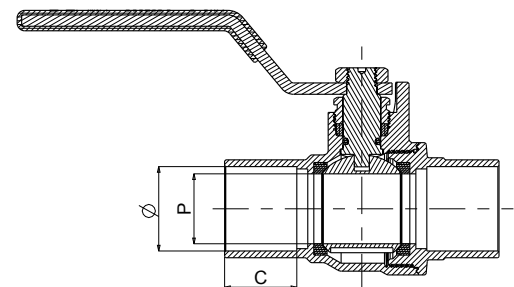
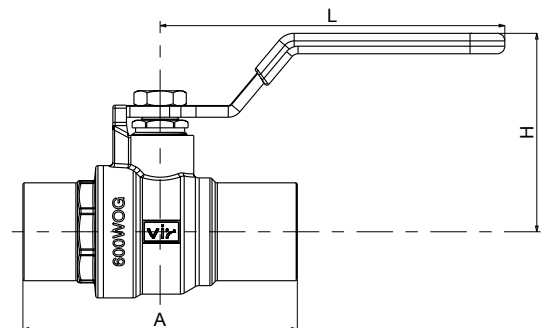


### Materials & Specifications

Item	Description	Material	Specification
1	Body	Low Lead Brass	CW510L
2	End piece	Low Lead Brass	CW510L
3	Ball	Low Lead Brass/Cr Plated	CW510L
4	Seat	PTFE	PTFE
5	Stem	Low Lead Brass	CW510L
6	O-ring	FKM	FKM
7	Packing	PTFE	PTFE
8	Packing nut	Brass	B124 C37700
9	Handle	Steel/Dc Plated	A36
10	Handle nut	Steel/Zn Plated	A36
11	Valve info	-	-

### Dimensions, Weights (inches-lbs.) & Valve Data

Size	1/2	3/4	1	1-1/4	1-1/2	2	2-1/2	3
Ø	0.627-0.631	0.877-0.881	1.128-1.131	1.378-1.381	1.628-1.632	2.128-2.132	2.628-2.632	3.128-3.132
A	2.20	2.87	3.43	3.82	4.25	5.31	6.34	7.72
C	0.51	0.75	0.91	0.98	1.09	1.34	1.50	1.69
H	1.93	2.07	2.36	2.60	2.87	3.25	4.17	5.13
L	3.58	3.58	4.96	4.96	5.55	5.55	9.91	11.06
P	0.50	0.73	0.95	1.22	1.46	1.95	2.44	2.91
Cv	11	26	55	103	111	353	409	530
Wt	0.36	0.55	0.89	1.13	1.64	2.68	5.60	8.50



### RED-WHITE VALVE CORP.

20600 Regency Lane, Lake Forest, CA 92630

TEL: 949.859.1010 • FAX: 949.859.7200 • www.redwhitevalvecorp.com

(150413)