

### Feature

Primary/secondary loop purge TEE  
 Used for hydraulic separation  
 Ball valve placed between 2 closely spaced TEEs  
 600# WOG  
 DZR lead free brass body  
 Full port design  
 Chrome plated ball  
 Adjustable packing gland  
 Solder connections  
 Virgin PTFE seats  
 Blow-out proof stem

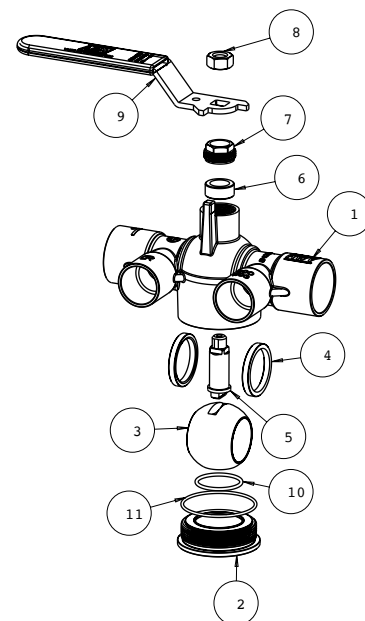


Working conditions:

Water: from 15°F to 260°F  
 below 32°F only for water with added antifreezing fluids  
 over 212°F only for water with added anti-boiling fluids

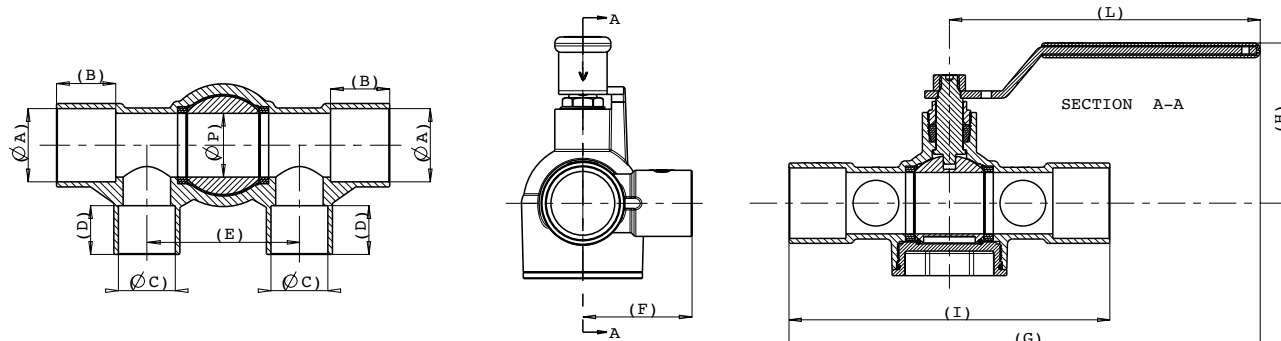
### Material

|    | Part         | Material                 | Specification    |
|----|--------------|--------------------------|------------------|
| 1  | Body         | DZR Lead Free Brass      | ASTM B30 C87850  |
| 2  | Ring nut     | DZR Lead Free Brass      | ASTM B927 C27453 |
| 3  | Ball         | LF Brass / Cr plated     | ASTM B927 C27450 |
| 4  | Seat         | PTFE                     | -                |
| 5  | Stem         | DZR Brass                | ASTM B927 C27453 |
| 6  | Packing ring | PTFE                     | TF1502           |
| 7  | Packing nut  | Brass                    | ASTM B124 C37700 |
| 8  | Nut          | Steel / Zn plated        | ASTM A36         |
| 9  | Handle       | Steel / Dacromet® plated | ASTM A36         |
| 10 | O-ring       | EPDM Perox 70SH          | NSF approved     |
| 11 | O-ring       | EPDM Perox 70SH          | NSF approved     |



### Dimension, Weight

| Part #         | Size | φA<br>[in]    | B<br>[in] | Branch<br>[in] | φC<br>[in]    | D<br>[in] | E<br>[in] | F<br>[in] | G<br>[in] | H<br>[in] | I<br>[in] | L<br>[in] | φP<br>[in] | Wt.<br>[lb] |
|----------------|------|---------------|-----------|----------------|---------------|-----------|-----------|-----------|-----------|-----------|-----------|-----------|------------|-------------|
| 8000S 100S075S | 1"   | 1.128 - 1.131 | 0.91      | ¾"             | 0.877 - 0.881 | 0.75      | 2.35      | 1.68      | 7.55      | 2.57      | 5.14      | 4.98      | 0.98       | 1.54        |
| 8000S 100S100S | 1"   | 1.128 - 1.131 | 0.91      | 1"             | 1.128 - 1.131 | 0.91      | 2.60      | 1.85      | 7.85      | 2.57      | 5.75      | 4.98      | 0.98       | 1.68        |
| 8000S 125S075S | 1¼"  | 1.377 - 1.381 | 0.98      | ¾"             | 0.877 - 0.881 | 0.75      | 2.68      | 1.81      | 7.78      | 2.74      | 5.59      | 4.98      | 1.23       | 1.87        |
| 8000S 125S100S | 1¼"  | 1.377 - 1.381 | 0.98      | 1"             | 1.128 - 1.131 | 0.91      | 2.93      | 1.97      | 7.99      | 2.74      | 6.02      | 4.98      | 1.23       | 2.00        |
| 8000S 150S125S | 1½"  | 1.628 - 1.632 | 1.09      | 1¼"            | 1.377 - 1.381 | 0.98      | 3.43      | 2.09      | 9.12      | 3.15      | 7.09      | 5.57      | 1.47       | 3.13        |
| 8000S 150S150S | 1½"  | 1.628 - 1.632 | 1.09      | 1½"            | 1.628 - 1.632 | 1.09      | 3.82      | 2.19      | 9.51      | 3.15      | 7.87      | 5.57      | 1.47       | 3.35        |
| 8000S 200S150S | 2"   | 2.128 - 2.132 | 1.34      | 1½"            | 1.628 - 1.632 | 1.09      | 4.21      | 2.56      | 9.98      | 3.51      | 8.82      | 5.57      | 1.95       | 4.89        |
| 8000S 200S200S | 2"   | 2.128 - 2.132 | 1.34      | 2"             | 2.128 - 2.132 | 1.34      | 4.69      | 2.82      | 10.5      | 3.51      | 9.84      | 5.57      | 1.95       | 5.33        |



### Feature

Primary/secondary loop purge TEE  
Used for hydraulic separation  
Ball valve placed between 2 closely spaced TEEs  
250# WOG  
DZR lead free brass body  
Full port design  
Chrome plated ball  
Adjustable packing gland  
EzPress connections  
Virgin PTFE seats  
Virgin PTFE seats  
Blow-out proof stem

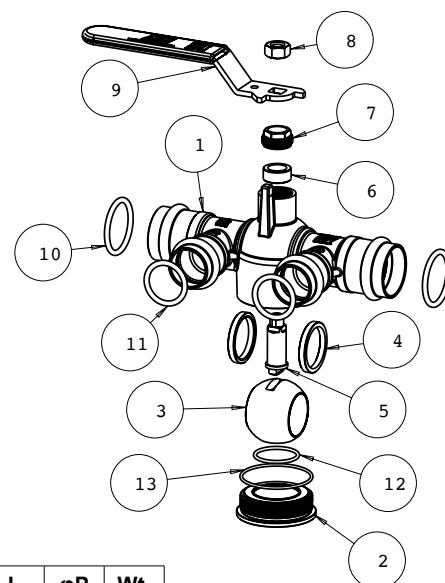


Working conditions:

Water: from 15°F to 260°F  
below 32°F only for water with added antifreezing fluids  
over 212°F only for water with added anti-boiling fluids

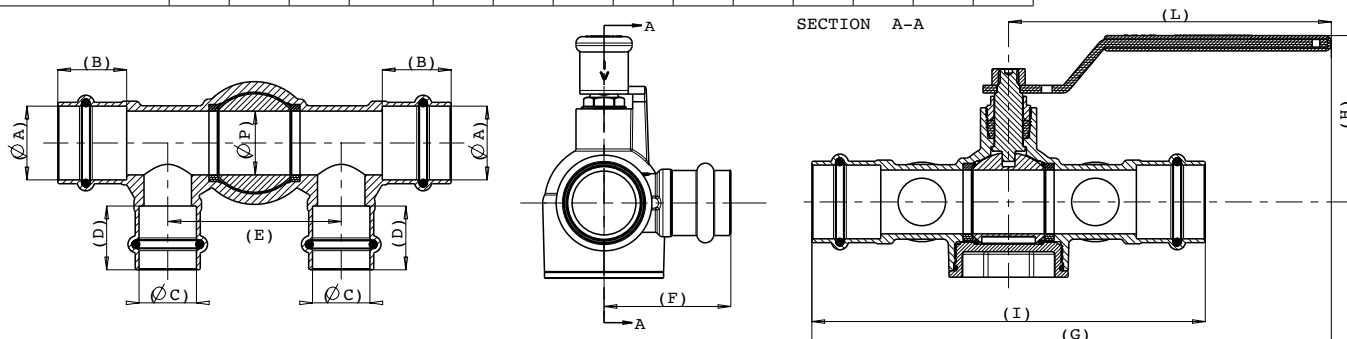
### Material

|    | Part         | Material                 | Specification    |
|----|--------------|--------------------------|------------------|
| 1  | Body         | DZR Brass                | ASTM B30 C87850  |
| 2  | Ring nut     | DZR Brass                | ASTM B927 C27453 |
| 3  | Ball         | LF Brass / Cr plated     | ASTM B927 C27450 |
| 4  | Seat         | PTFE                     | -                |
| 5  | Stem         | DZR Brass                | ASTM B927 C27453 |
| 6  | Packing ring | PTFE                     | -                |
| 7  | Packing nut  | Brass                    | ASTM B124 C37700 |
| 8  | Nut          | Steel / Zn plated        | ASTM A36         |
| 9  | Handle       | Steel / Dacromet® plated | ASTM A36         |
| 10 | O-ring       | EPDM Pero                | NSF approved     |
| 11 | O-ring       | EPDM Perox               | NSF approved     |
| 12 | O-ring       | EPDM Perox 70SH          | NSF approved     |
| 13 | O-ring       | EPDM Perox 70SH          | NSF approved     |



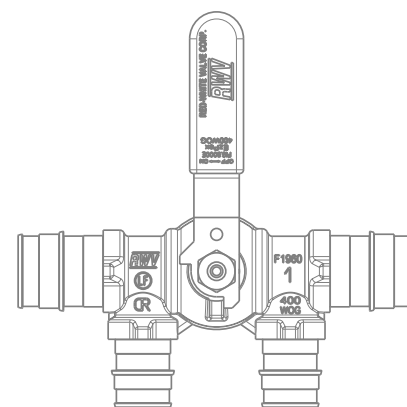
### Dimension, Weight

| Part #         | Size | φA<br>[in] | B<br>[in] | Branch<br>[in] | φC<br>[in] | D<br>[in] | E<br>[in] | F<br>[in] | G<br>[in] | H<br>[in] | I<br>[in] | L<br>[in] | φP<br>[in] | Wt.<br>[lb] |
|----------------|------|------------|-----------|----------------|------------|-----------|-----------|-----------|-----------|-----------|-----------|-----------|------------|-------------|
| 8000P 100P075P | 1"   | 1.14       | 1.06      | ¾"             | 0.89       | 0.98      | 2.68      | 1.96      | 8.01      | 2.57      | 6.07      | 4.98      | 0.98       | 1.66        |
| 8000P 100P100P | 1"   | 1.14       | 1.06      | 1"             | 1.14       | 1.06      | 2.68      | 2.03      | 8.14      | 2.57      | 6.32      | 4.98      | 0.98       | 1.74        |
| 8000P 125P075P | 1¼"  | 1.39       | 1.06      | ¾"             | 0.89       | 0.98      | 2.68      | 2.14      | 8.06      | 2.74      | 6.17      | 4.98      | 1.23       | 2.00        |
| 8000P 125P100P | 1¼"  | 1.39       | 1.06      | 1"             | 1.14       | 1.06      | 3.19      | 2.22      | 8.44      | 2.74      | 6.93      | 4.98      | 1.23       | 2.15        |
| 8000P 150P125P | 1½"  | 1.64       | 1.26      | 1¼"            | 1.39       | 1.06      | 3.82      | 2.44      | 9.78      | 3.15      | 8.43      | 5.57      | 1.47       | 3.49        |
| 8000P 150P150P | 1½"  | 1.64       | 1.26      | 1½"            | 1.64       | 1.26      | 3.82      | 2.56      | 9.90      | 3.15      | 8.66      | 5.57      | 1.47       | 3.72        |
| 8000P 200P150P | 2"   | 2.14       | 1.52      | 1½"            | 1.64       | 1.26      | 4.49      | 2.95      | 10.4      | 3.51      | 9.61      | 5.57      | 1.95       | 5.24        |
| 8000P 200P200P | 2"   | 2.14       | 1.52      | 2"             | 2.14       | 1.52      | 4.73      | 3.15      | 10.7      | 3.51      | 10.2      | 5.57      | 1.95       | 5.52        |



### Feature

Primary/secondary loop purge TEE  
 Used for hydraulic separation  
 Ball valve placed between 2 closely spaced TEEs  
 400# WOG  
 DZR lead free brass body  
 Full port design  
 Chrome plated ball  
 Adjustable packing gland  
 PEX ASTM F1960 connections  
 Virgin PTFE seats  
 Blow-out proof stem

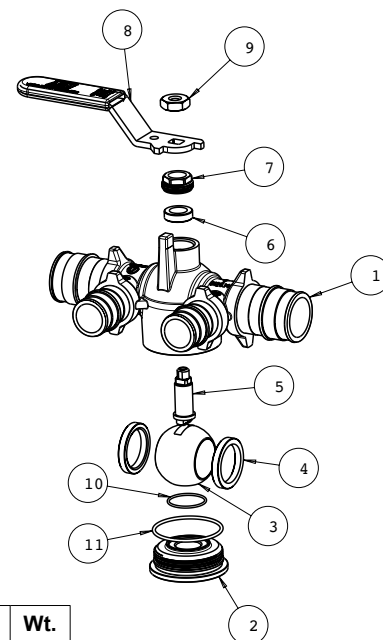


Working conditions:

Water: from 15°F to 260°F  
 below 32°F only for water with added antifreezing fluids  
 over 212°F only for water with added anti-boiling fluids

### Material

|    | Part         | Material                 | Specification    |
|----|--------------|--------------------------|------------------|
| 1  | Body         | DZR Brass                | ASTM B30 C87850  |
| 2  | Ring nut     | DZR Brass                | ASTM B927 C27453 |
| 3  | Ball         | DZR LF Brass / Cr plated | ASTM B927 C27453 |
| 4  | Seat         | PTFE                     | -                |
| 5  | Stem         | DZR Brass                | ASTM B927 C27453 |
| 6  | Packing ring | PTFE                     | -                |
| 7  | Packing nut  | Brass                    | ASTM B124 C37700 |
| 8  | Nut          | Steel / Zn plated        | ASTM A36         |
| 9  | Handle       | Steel / Dacromet® plated | ASTM A36         |
| 10 | O-ring       | EPDM Perox 70SH          | NSF approved     |
| 11 | O-ring       | EPDM Perox 70SH          | NSF approved     |



### Dimension, Weight

| Part #         | Size | φA<br>[in] | Branch<br>[in] | φB<br>[in] | C<br>[in] | D<br>[in] | E<br>[in] | F<br>[in] | H<br>[in] | L<br>[in] | Wt.<br>[lb] |
|----------------|------|------------|----------------|------------|-----------|-----------|-----------|-----------|-----------|-----------|-------------|
| 8000E 100E075E | 1"   | PEX F1960  | 3/4"           | PEX F1960  | 2.05      | 1.89      | 6.36      | 5.51      | 2.26      | 3.60      | 1.29        |
| 8000E 100E100E | 1"   | PEX F1960  | 1"             | PEX F1960  | 2.28      | 2.28      | 6.57      | 5.94      | 2.26      | 3.60      | 1.47        |

