

### Feature

600# WOG  
DZR lead free brass body  
Full port design  
Chrome plated ball  
Double ball valve body for isolation  
High flow hose drains with cap and chain  
Adjustable packing gland  
FNPT connections  
Virgin PTFE seats  
Blow-out proof stem

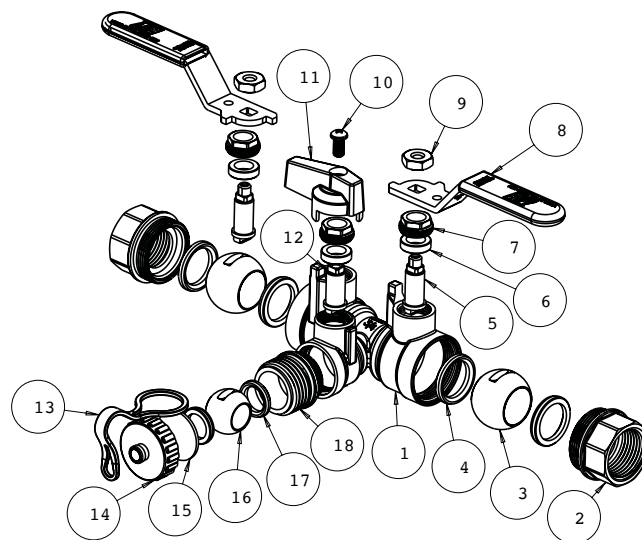


### Working conditions:

Water: from 15°F to 260°F  
below 32°F only for water with added antifreezing fluids  
over 212°F only for water with added anti-boiling fluids

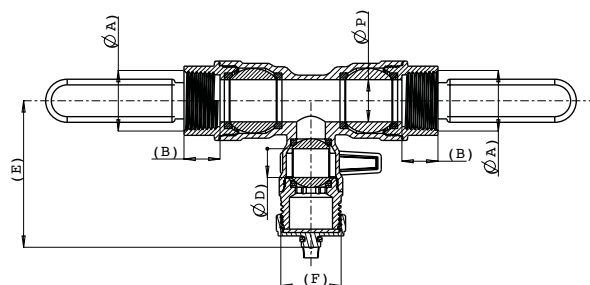
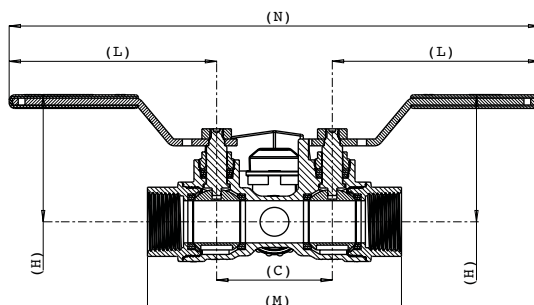
### Material

	Part	Material	Specification
1	Body	DZR Lead Free Brass	ASTM B927 C27453
2	Fixed end	DZR Lead Free Brass	ASTM B927 C27453
3	Ball	LF Brass / Cr plated	ASTM B927 C27450
4	Seat	PTFE	-
5	Stem	DZR Lead Free Brass	ASTM B927 C27453
6	Packing ring	PTFE	-
7	Packing nut	Brass	ASTM B124 C37700
8	Handle	Steel / Dacromet® plated	ASTM A36
9	Nut	Steel / Zn plated	ASTM A36
10	Screw	Steel / Zn plated	ASTM A36
11	Handle	Aluminum	ASTM B85
12	Stem	DZR Lead Free Brass	ASTM B927 C27453
13	Tie	Rubber	-
14	Drain cap	Brass	ASTM B283 C37700
15	Drain cap gasket	EPDM Perox	NSF approved
16	Ball	LF Brass / Cr plated	ASTM B927 C27450
17	Seat	PTFE	-
18	Fixed end	DZR Lead Free Brass	ASTM B927 C27453



### Dimension, Weight

Size	φA [in]	B [in]	C [in]	φD [in]	E [in]	F [in]	H [in]	L [in]	M [in]	N [in]	φP [in]	Wt. [lb]
½"	½ - 14NPT	0.61	1.85	0.50	2.54	¾-11.5NH	2.07	3.60	4.02	9.06	0.50	1.28
¾"	¾ - 14NPT	0.63	2.01	0.50	2.54	¾-11.5NH	2.20	3.60	4.41	9.21	0.73	1.58
1"	1 - 11.5NPT	0.75	2.13	0.50	2.54	¾-11.5NH	2.57	4.98	5.09	12.1	0.98	2.46
1¼"	1¼ - 11.5NPT	0.77	2.72	0.73	3.02	¾-11.5NH	2.74	4.98	6.02	12.7	1.23	3.10



### Feature

600# WOG  
 DZR lead free brass body  
 Full port design  
 Chrome plated ball  
 Double ball valve body for isolation  
 High flow hose drains with cap and chain  
 Adjustable packing gland  
 Solder connections  
 Virgin PTFE seats  
 Blow-out proof stem

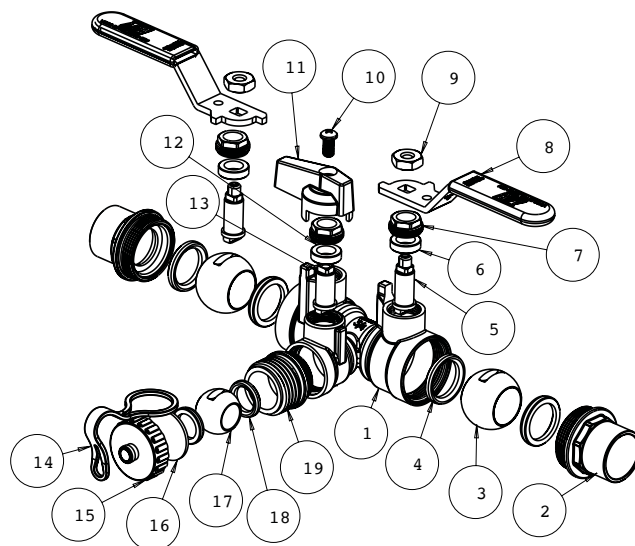


Working conditions:

Water: from 15°F to 260°F  
 below 32°F only for water with added antifreezing fluids  
 over 212°F only for water with added anti-boiling fluids

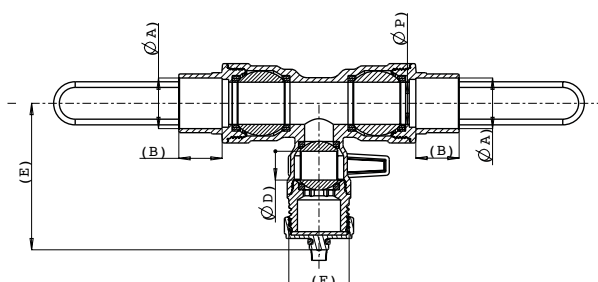
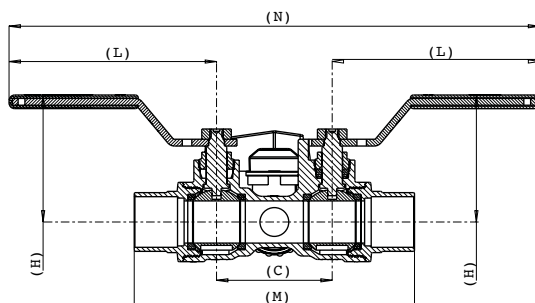
### Material

	Part	Material	Specification
1	Body	DZR Lead Free Brass	ASTM B927 C27453
2	Fixed end	DZR Lead Free Brass	ASTM B927 C27453
3	Ball	LF Brass / Cr plated	ASTM B927 C27450
4	Seat	PTFE	-
5	Stem	DZR Lead Free Brass	ASTM B927 C27453
6	Packing ring	PTFE	TF1502
7	Packing nut	Brass	ASTM B124 C37700
8	Handle	Steel / Dacromet® plated	ASTM A36
9	Nut	Steel / Zn plated	ASTM A36
10	Screw	Steel / Zn plated	ASTM A36
11	Handle	Aluminum	ASTM B85
12	Packing ring	PTFE	-
13	Stem	DZR Lead Free Brass	ASTM B927 C27453
14	Tie	Rubber	-
15	Drain cap	Brass	ASTM B283 C37700
16	Drain cap gasket	EPDM Perox	NSF approved
17	Ball	LF Brass / Cr plated	ASTM B927 C27450
18	Seat	PTFE	-
19	Fixed end	DZR Lead Free Brass	ASTM B927 C27453



### Dimension, Weight

Size	φA [in]	B [in]	C [in]	φD [in]	E [in]	F [in]	H [in]	L [in]	M [in]	N [in]	φP [in]	Wt. [lb]
½"	0.627 - 0.631	0.51	1.85	0.50	2.54	¾-11.5NH	2.07	3.60	4.06	9.06	0.50	1.26
¾"	0.877 - 0.881	0.75	2.01	0.50	2.54	¾-11.5NH	2.20	3.60	4.87	9.21	0.73	1.55
1"	1.128 - 1.131	0.91	2.13	0.50	2.54	¾-11.5NH	2.57	4.98	5.62	12.1	0.98	2.37
1¼"	1.377 - 1.381	0.98	2.72	0.73	3.02	¾-11.5NH	2.74	4.98	6.55	12.7	1.23	2.92



**WARNING:** This product can expose you to chemicals including lead, which is known to the State of California to cause cancer and birth defects or other reproductive harm. For more information go to [www.P65Warnings.ca.gov](http://www.P65Warnings.ca.gov).

Drawings, photos and data are provided for information only and subject to change without notice. No part of this document may be reproduced, copied, modified or adapted, without the prior written consent of the copyright owner, unless otherwise indicated.

### Feature

250# WOG  
 DZR lead free brass body  
 Full port design  
 Chrome plated ball  
 Double ball valve body for isolation  
 High flow hose drains with cap and chain  
 Adjustable packing gland  
 EzPress connections  
 Virgin PTFE seats  
 Blow-out proof stem

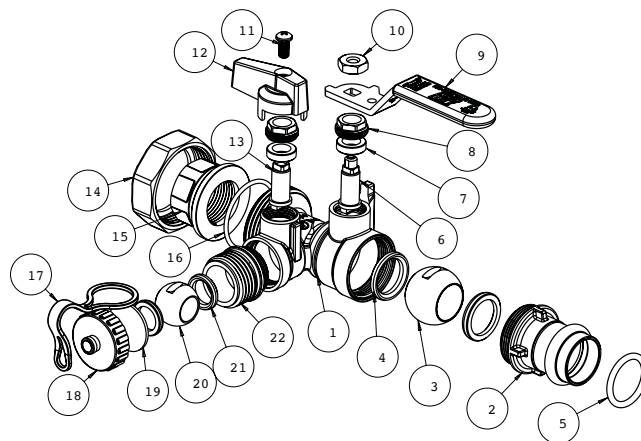


Working conditions:

Water: from 15°F to 260°F  
 below 32°F only for water with added antifreezing fluids  
 over 212°F only for water with added anti-boiling fluids

### Material

	Part	Material	Specification
1	Body	DZR Lead Free Brass	ASTM B927 C27453
2	Fixed end	DZR Lead Free Brass	ASTM B927 C27453
3	Ball	LF Brass / Cr plated	ASTM B927 C27450
4	Seat	PTFE	-
5	Stem	DZR Lead Free Brass	ASTM B927 C27453
6	Packing ring	PTFE	-
7	Packing nut	Brass	ASTM B124 C37700
8	Handle	Steel / Dacromet® plated	ASTM A36
9	Nut	Steel / Zn plated	ASTM A36
10	Screw	Steel / Zn plated	ASTM A36
11	Handle	Aluminum	ASTM B85
12	Stem	DZR Lead Free Brass	ASTM B927 C27453
13	Tie	Rubber	-
14	Drain cap	Brass	ASTM B283 C37700
15	Drain cap gasket	EPDM Perox	NSF approved
16	Ball	LF Brass / Cr plated	ASTM B927 C27450
17	Seat	PTFE	-
18	Fixed end	DZR Lead Free Brass	ASTM B927 C27453
19	O-ring	EPDM Perox 70SH	NSF approved



### Dimension, Weight

Size	φA [in]	B [in]	C [in]	φD [in]	E [in]	F [in]	H [in]	L [in]	M [in]	N [in]	φP [in]	Wt. [lb]
½"	0.64	0.87	1.85	0.50	2.54	¾-11.5NH	2.07	3.60	5.08	9.06	0.50	1.31
¾"	0.89	0.98	2.01	0.50	2.54	¾-11.5NH	2.20	3.60	5.87	9.21	0.73	1.64
1"	1.14	1.06	2.13	0.50	2.54	¾-11.5NH	2.57	4.98	6.32	12.1	0.98	2.43
1¼"	1.39	1.06	2.72	0.73	3.02	¾-11.5NH	2.74	4.98	7.13	12.7	1.23	3.00

