

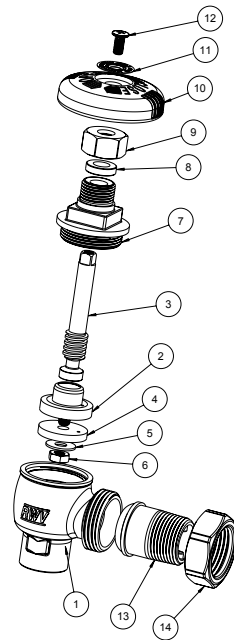
**Feature**

- 60# WOG
- Brass body & bonnet
- EPDM gasket
- Vented disc
- Solder x Male union



**Material**

	Part	Material	Specification
1	Body	Brass	ASTM B283 C37700
2	Shutter	Brass	ASTM B124 C37700
3	Stem	Brass	ASTM B124 C37700
4	Seat gasket	EPDM Perox 70SH	-
5	Washer	Steel / Zn plated	ASTM A36
6	Nut	Brass	ASTM B124 C37700
7	Bonnet	Brass	ASTM B124 C37700
8	Packing ring	PTFE	PTFE
9	Packing nut	Brass	ASTM B124 C37700
10	Handwheel	Phenolic Resin	-
11	Disk	Aluminum	-
12	Screw	Steel / Zn plated	ASTM A36
13	Tailpiece	Brass	ASTM B283 C37700
14	Union nut	Brass	ASTM B283 C37700



**Dimension, Weight**

Size	T	T1	A [in]	H [in]	L [in]	P [in]	C [in]	C1 [in]	Wt. [lb]
1/2"	0.627 - 0.631	1/2 - 14 NPT	4.00	3.00	2.23	0.50	0.51	0.63	0.794
3/4"	0.877 - 0.881	3/4 - 14 NPT	4.19	3.09	2.69	0.77	0.67	0.71	1.12

