

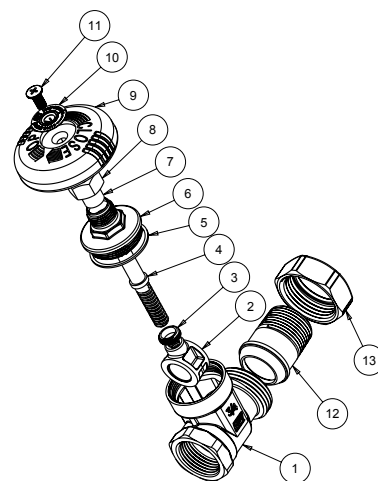
Feature

15# WSP
200# WOG
Brass body, wedge & bonnet
Screw in bonnet
FNPT x Male union



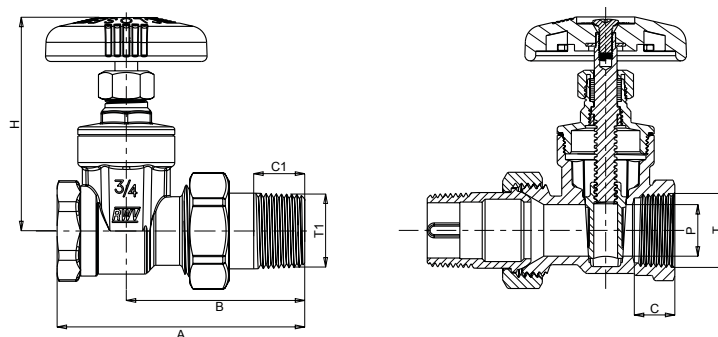
Material

	Part	Material	Specification
1	Body	Brass	ASTM B283 C37700
2	Wedge	Brass	ASTM B283 C37700
3	Stem ring	Brass	ASTM B124 C37700
4	Stem	Brass	ASTM B124 C37700
5	Body/Bonnet	PTFE	PTFE
6	Bonnet	Brass	ASTM B283 C37700
7	Packing ring	Graphite SIGRAFLEX® APX	
8	Packing nut	Brass	ASTM B124 C37700
9	Handwheel	Phenolic Resin	-
10	Disk	Aluminum	-
11	Screw	Steel / Zn plated	ASTM A36
12	Tailpiece	Brass	ASTM B283 C37700
13	Union nut	Brass	ASTM B283 C37700



Dimension, Weight

	T	T1	A [in]	B [in]	C [in]	C1 [in]	P [in]	H [in]	Wt. [lb]
1/2"	1/2 - 14 NPT	1/2 - 14 NPT	2.95	2.05	0.54	0.63	0.52	2.72	0.657
3/4"	3/4 - 14 NPT	3/4 - 14 NPT	3.43	2.48	0.56	0.71	0.72	2.95	0.915
1"	1 - 11.5 NPT	1 - 11.5 NPT	3.78	2.72	0.67	0.91	0.87	3.35	1.26
1 1/4"	1 1/4 - 11.5 NPT	1 1/4 - 11.5 NPT	4.45	3.23	0.69	0.98	1.15	3.88	2.04
1 1/2"	1 1/2 - 11.5 NPT	1 1/2 - 11.5 NPT	4.76	3.54	0.69	0.98	1.39	4.13	2.90



WARNING: This product can expose you to chemicals including lead, which is known to the State of California to cause cancer and birth defects or other reproductive harm. For more information go to www.P65Warnings.ca.gov.

Drawings, photos and data are provided for information only and subject to change without notice. No part of this document may be reproduced, copied, modified or adapted, without the prior written consent of the copyright owner, unless otherwise indicated.