

**Feature**

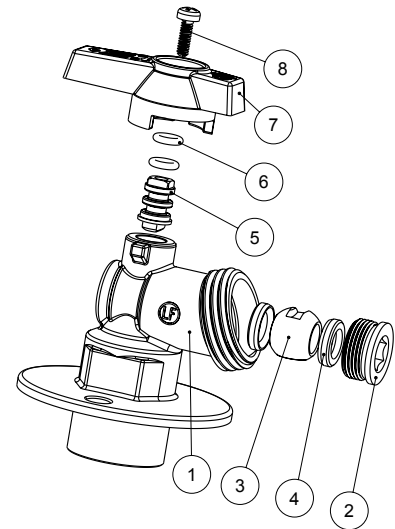
- 125# CWP
- Lead free brass body
- Solder x Hose
- Solder end (ASME B16.22)
- Quarter turn
- Larger flanged design for improved stability & durability
- AB1953, NSF/ANSI 61 & 372 certified



Connection Working Pressure				
Solder used in joint	Working temp (°F)	Max. working pressure (PSI)		
		3/8" - 1"	1 1/4" - 2"	2 1/2" - 4"
95-5 Tin antimony (ASTM B32 grade 95TA)	100	500	400	300
	150	400	350	275
	200	300	250	200
	250	200	175	150

**Material**

Part	Material	Specification
1 Body	Lead Free Brass	ASTM B927 C27450
2 Seat retainer	Lead Free Brass	ASTM B927 C27450
3 Ball	Lead Free Brass / Cr plated	ASTM B927 C27450
4 Seat	PTFE	PTFE
5 Stem	Lead Free Brass	ASTM B927 C27450
6 O-ring	NBR 70SH	NSF Approved
7 Handle	Aluminium	ASTM B85
8 Screw	Steel / Zn plated	ASTM A36



**Dimension, Weight**

	S	T	WR [in]	A [in]	H [in]	H1 [in]	H2 [in]	L [in]	C1 [in]	C2 [in]	ΦP [in]	ΦP1 [in]	ΦD [in]	ΦD1 [in]	ΦD2 [in]	R° [deg]	Wt. [lb]
1/2"	0.627 - 0.631	3/4 - 11.5 NH	0.79	1.44	1.20	1.10	1.44	1.18	0.51	0.31	0.31	0.31	2.26	0.26	1.73	20	0.40
3/4"	0.877 - 0.881	3/4 - 11.5 NH	1.02	1.44	1.20	1.10	1.68	1.18	0.75	0.31	0.31	0.31	2.26	0.26	1.73	20	0.43

