

Feature

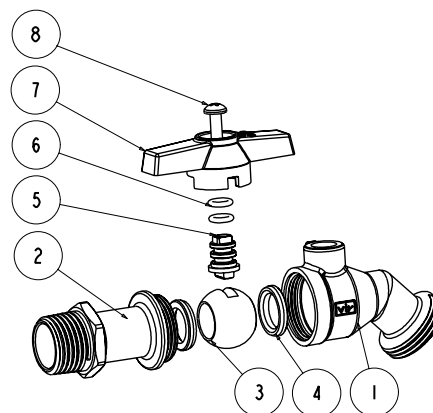
125# CWP
 Lead free brass body
 MNPT x Hose end
 Threaded end (ASME B1.20.1-NPT)
 1/2" will also accept copper tube for solder joint
 Chrome plated ball
 Virgin PTFE seats
 No Kink Spout
 Double NBR O-ring Packing
 AB1953, NSF/ANSI 61 & 372 certified

RW-315AB: Red handle
 RW-315ABBLUE: Blue handle



Material

	Part	Material	Specification
1	Body	Lead Free Brass	ASTM B927 C27450
2	End piece	Lead Free DZR Brass	ASTM B927 C27453
3	Ball	Lead Free Brass/Cr Plated	ASTM B927 C27450
4	Seat	PTFE	PTFE
5	Stem	Lead Free Brass	ASTM B927 C27450
6	O-ring	NBR	NSF Approved
7	Handle	Aluminum	-
8	Handle nut	Steel / Zn Plated	ASTM A36



Dimension

	ϕ	A	A1	H	H1	L	C	Wt.
		[in]	[in]	[in]	[in]	[in]	[in]	[lb]
1/2"	1/2 - 14 NPT	3.79	2.09	1.37	0.91	2.20	0.55	0.40
3/4"	3/4 - 14 NPT	3.94	2.19	1.37	0.91	2.20	0.56	0.44

